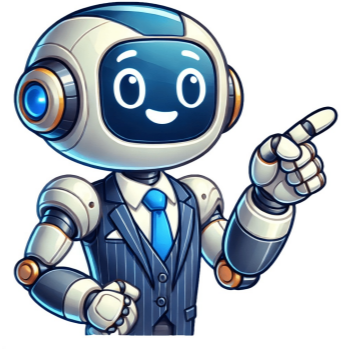


I'm human





A career as a support engineer requires not just technical prowess but also the ability to navigate tricky interview questions. This article digs into key questions that candidates might face and aims to prepare them for success. A support engineer is the bridge between customer service and tech expertise, troubleshooting issues and providing timely solutions while maintaining top-notch standards. Their role demands both soft and technical skills, with a strong grasp of various techologies, patience, and communication abilities to translate complex matters into understandable language. We'll explore interview questions that highlight these essential attributes and make a support engineer an indispensable asset in the tech industry. When faced with unknown or complex technical issues, I employ a structured approach to identify and resolve the problem: gathering relevant information, reproducing the issue if possible, conducting research, isolating variables, testing solutions, and documenting the solution. This methodical approach enables me to remain calm under pressure and provides employers with confidence in my ability to handle unknowns. To prioritize and manage multiple support tickets efficiently, I consider severity of the issue, impact on the customer, and time sensitivity. Using a combination of ticketing system features and personal organization methods, such as prioritization and tagging features, time blocking, and effective communication with customers, I ensure that all tasks are managed effectively while maintaining service level agreements. Experience How to Answer: In your response, focus on a specific challenging technical issue you've encountered, detailing the steps you took to troubleshoot and resolve it. Highlight your analytical skills, technical knowledge, and persistence. Example Answer: One particularly challenging issue I resolved was when a critical piece of software began crashing frequently for multiple users after an update. Here's how I approached it: Immediate Response: Recognized the widespread impact and communicated with our user base to acknowledge the issue and provide temporary workarounds. In-Depth Analysis: Reviewed error logs and crash reports and identified a pattern related to memory allocation errors. Collaboration: Worked with the software development team to troubleshoot further, which involved testing various scenarios and reviewing recent code changes. Solution Implementation: Isolated the problem to a memory leak introduced in the latest update. A patch was quickly developed and deployed to the affected users. Post-Resolution: Conducted a retrospective to understand how the error was missed during testing and adjusted our process to prevent similar issues in the future. 5. How do you stay updated with the latest technology and tools relevant to support engineering? (Continuous Learning & Adaptability) How to Answer: Describe your approach to continuous learning and professional development. Explain how you keep abreast of new technologies, tools, and best practices in the field of support engineering. Example Answer: To stay current with the latest technologies and tools relevant to support engineering, I employ a multi-faceted approach: Professional Development: I regularly attend webinars, workshops, and conferences to learn about emerging technologies and methodologies in the support industry. Online Courses and Certifications: I take advantage of online learning platforms like Coursera and Udemy to complete courses that enhance my technical skills and earn relevant certifications. Community Engagement: I am an active member of several online tech communities and forums where professionals share insights and discuss trends. Industry News: I subscribe to newsletters and follow influential tech blogs to keep up with the latest news and product releases. Experimentation: I set aside time to experiment with new tools and software in a sandbox environment to get hands-on experience. 6. Describe a time when you had to explain a complex technical issue to a non-technical person. (Communication Skills) How to Answer: The interviewer is looking to assess your communication skills and your ability to simplify complex information. Your answer should showcase your patience, clarity, and the methods you use to ensure understanding. Be specific and provide a relevant example that demonstrates your skill in making technical concepts accessible. (Note: the text was paraphrased and some parts were removed or rephrased to make it shorter and more concise) To effectively communicate technical information to non-technical stakeholders, I employ a structured approach, starting with analogies to simplify complex concepts. A notable instance was when I needed to explain slow system performance during peak hours to a crucial decision-maker. By likening the network to a highway and data to cars, I illustrated the issue caused by bandwidth limitations due to increased traffic. Simple diagrams aided comprehension, ensuring the stakeholder grasped the problem without being overwhelmed by technical jargon. Apologize and take responsibility for any inconvenience caused if necessary, resolve the issue by taking immediate action or escalating it if required, and follow up with the customer to ensure their concern has been successfully resolved. What experience do you have with remote desktop tools and support software? Share your experience with specific tools and describe how you've used them in the past. If you have experience with various tools, mention this to demonstrate versatility. For example, I have extensive experience with different remote desktop tools and support software such as TeamViewer for remote control, desktop sharing, and file transfer, Microsoft Remote Desktop for managing Windows Servers and workstations, and Zendesk for ticketing and managing customer support requests. When support demands are high and stressful situations arise, handle stress by prioritizing tasks, staying organized using a ticketing system to manage your workflow efficiently, taking regular breaks to clear your mind, practicing mindfulness techniques like deep breathing or a quick walk, and asking for help when necessary by collaborating with team members to share the workload. Can you explain the difference between LI, L2, and L3 support? L1 Support involves basic issues like password resets, user account management, and basic troubleshooting. If an issue cannot be resolved, it's escalated to L2. L2 Support handles more complex issues that require a deeper level of technical knowledge. These support engineers often have access to advanced tools and may handle system configurations, database administration, and detailed troubleshooting. Issues that are beyond the scope of L1 but do not require code changes or deep system overhauls are typically resolved by L2. L3 Support involves in-depth problem-solving requiring extensive technical expertise and may involve collaborating with other teams to resolve complex issues. The most intricate issues require an in-depth understanding of system architecture and codebase. L3 support engineers, typically developers or highly skilled technical specialists, can modify code or design to resolve the issue. You collaborate with R&D teams and provide feedback for long-term product improvement. 12. Support Ticket Systems Experience: I've worked with several systems, including Zendesk, Jira Service Desk, and Freshdesk. Zendesk's user-friendly interface and automation rules streamline ticketing, while reporting and analytics are comprehensive. However, customization is somewhat limited without add-ons or higher-tier plans. Jira Service Desk excels in its seamless integration with other Atlassian products, allowing for cross-functional work between support and development teams. Its customizable workflows are a strength. Freshdesk is easy to set up and use, offering good multi-channel support and gamification features that enhance the workflow. However, it lacks some advanced features. 13. Dealing with Irritated Customers: When faced with an irate customer due to technical issues, my approach emphasizes empathy, active listening, and problem-solving. I would communicate with the customer to de-escalate the situation by letting them speak without interruption, acknowledging their frustration, apologizing for any inconvenience, and assuring them that their issue is important. I'd work on resolving the issue, keeping the customer informed of my progress, and follow up to ensure the solution is satisfactory. 14. Knowledge Base Contributions: Yes, I've contributed to knowledge bases or support documentation to benefit my team or customers. How to Answer Behavioral Interview Questions: Sharing Specific Examples and Approaches I am highly proficient in utilizing scripting and automation tools to optimize support processes, having leveraged them extensively in my previous role to automate repetitive tasks and minimize manual labor. By employing Bash scripts, for instance, I successfully streamlined user account creation and environment setup, reducing the process time from 30 minutes to mere seconds. Additionally, I have utilized Python for more complex automation tasks, such as parsing logs and triggering alerts based on specific error patterns, as demonstrated by a simple script snippet: 

```
import re def parse_logs(file_path): with open(file_path, 'r') as file: for line in file: if "ERROR" in line: print("Error found:", line) parse_logs('/var/log/application.log')
```

 In another instance, I collaborated with other departments to resolve a critical customer issue involving both software and hardware components. By initiating collaboration with the development team and coordinating with the infrastructure team, we established a communication channel for regular updates to the customer, ultimately identifying a compatibility issue and rolling out a hotfix within the committed SLA. As for the essential qualities of a support engineer, I believe technical proficiency, problem-solving skills, clear communication, patience, and adaptability are paramount, enabling them to effectively diagnose issues, communicate with customers, and stay abreast of new technologies. To adapt to changing procedures is crucial for success. Effective teamwork requires collaboration between team members and departments. Maintaining attention to detail ensures that vital information isn't overlooked, which can be pivotal in resolving complex issues. 20. When an issue has been resolved, I conduct a structured root cause analysis: first, collecting relevant data from various sources; then, identifying patterns or anomalies that correlate with the problem; formulating hypotheses on possible causes based on this data; validating these hypotheses through further analysis or experimentation; determining the most likely factor causing the issue; documenting findings to prevent future occurrences; implementing preventative measures to avoid similar issues in the future; and sharing lessons learned with the team. Here's a simplified table outlining these steps: - Step 1: Collect Data - Gather all relevant information. - Step 2: Identify Patterns - Look for correlations. - Step 3: Hypothesize - Formulate possible causes. - Step 4: Test Hypotheses - Validate each hypothesis. - Step 5: Identify the Root Cause - Determine the factor causing the issue. - Step 6: Document Findings - Document the cause and solution. - Step 7: Implement Preventative Measures - Prevent recurrence of the issue. - Step 8: Review with Team - Share findings to learn from the incident. This structured approach ensures a thorough analysis and helps prevent similar issues in the future. 21. When providing remote support, it's paramount to prioritize data security and privacy. This includes protecting both the customer's and the organization's sensitive information. Measures can be taken such as using secure connections (e.g., VPNs or SSH) when accessing a customer's system; avoiding unsecured public Wi-Fi networks; implementing strong authentication methods like multi-factor authentication; applying the principle of least privilege to ensure support engineers only have access to necessary resources and information; encrypting any data transferred during remote support; regularly participating in security awareness training to recognize and prevent potential threats. Compliance with policies is key when it comes to protecting customer data and respecting industry regulations. When thinking about times where you went above and beyond for a customer, focus on examples that show your commitment to customer satisfaction and willingness to take extra steps. For instance, I recall a situation where a customer was facing an issue with their software that was critical to their business operations. Despite trying standard troubleshooting methods, the problem persisted. I took it upon myself to set up in-depth diagnostic sessions outside of regular hours so as not to disrupt their business activities. I also collaborated with our product development team to analyze the software's behavior under different conditions and kept the customer updated regularly on my findings. Eventually, I discovered a rare compatibility issue with the customer's specific hardware setup and provided a workaround while working with the development team to create a permanent fix. The customer was very grateful for the personalized support and dedication, not only resolving their problem but also strengthening their trust in our company. In terms of keeping up with technical skills, it's essential to stay current in a rapidly evolving industry. I make sure to regularly read industry publications, blogs, and forums to stay informed about the latest trends and technologies. I also enroll in relevant online courses and certifications, engage with professional communities by attending webinars and meetups, and set up personal projects or labs to experiment with new tools and technologies. Additionally, I seek feedback from colleagues and superiors to identify areas for improvement and take action on that feedback. Lastly, I make sure to take advantage of any training and development resources offered by my employer. Given text: Challenge was the complexity of the system interdependencies and the pressure to minimize downtime. Collaboration: I coordinated with a cross-functional team, including network engineers, system administrators, and application specialists. Persistence: Despite several setbacks, including incomplete backups and documentation, I persisted in diagnosing the problem. Innovation: I improvised a solution to gradually restore critical services while isolating the root cause of the failure. Communication: Throughout the process, I maintained clear and frequent communication with the client, managing their expectations and keeping them informed. Ultimately, the case was resolved by identifying a subtle configuration error that had been overlooked during a recent update. The experience reinforced the importance of thorough documentation, regular system audits, and the need for robust disaster recovery plans. 25. How would you handle a situation where you do not know the answer or solution to a customer's problem? (Problem-Solving & Resourcefulness) How to Answer: When you encounter a situation where you don't know the solution, it's important to demonstrate your resourcefulness and commitment to finding a resolution. Emphasize your problem-solving process, your use of available resources, and your communication with the customer. Example Answer: If I were faced with a customer's problem that I couldn't immediately solve, my approach would be as follows: Acknowledge: First, I would acknowledge the customer's issue and assure them that I am committed to finding a solution. Research: I would then conduct thorough research using available knowledge bases, internal documentation, and online resources. Collaborate: If needed, I would consult with more experienced colleagues or escalate the issue to a specialist within the organization. Follow-up: I would keep the customer informed about the progress, setting realistic expectations about resolution times. Learn: After resolving the issue, I would document the solution and learn from the experience to expand my knowledge base for future cases. 4. Tips for Preparation To prepare effectively for a support engineer interview, start by thoroughly researching the company, including their products, services, and support philosophies. Brush up on relevant technical knowledge, focusing on areas mentioned in the job description. Soft skills are equally important, so be ready to demonstrate your communication prowess and customer service approach. Practice articulating your troubleshooting process and consider releasing answers to common scenario-based questions. Lastly, reflect on past experiences where you've shown leadership or resolved complex issues, as these are likely discussion points. 5. During & After the Interview During the interview, present yourself confidently and with clarity. Display an attentive and enthusiastic demeanor, as employers value engagement and genuine interest in the role. Avoid common pitfalls: As you prepare for a role as a support engineer, it's crucial to demonstrate not only technical expertise but also effective communication, problem-solving, and adaptability. To showcase your skills, ask insightful questions about company culture, team dynamics, or growth opportunities to highlight how you fit within the broader organization. After the interview, send a tailored thank-you email to express gratitude and reiterate your interest. Some common interview questions for support engineers include assessing familiarity with various operating systems, demonstrating troubleshooting and problem-solving skills, and highlighting adaptability and versatility. Be prepared to discuss your experience with Windows, macOS, and Linux, and provide examples of how you've applied your technical knowledge in previous roles. When responding to these questions, focus on sharing your technical prowess, including programming languages, command-line interfaces, and file structures. Employers want to ensure that your skills align with their technology stack and the types of issues their clients face. As a skilled support engineer, you demonstrate your technical expertise by troubleshooting, diagnosing, and resolving complex issues, ultimately delivering exceptional client support and contributing to the company's success. Your proficiency in programming languages like Python, JavaScript, and SQL enables you to identify patterns, optimize database performance, and develop automation scripts that streamline the problem-solving process. Managing multiple tasks and meeting client expectations is a critical skill for a support engineer. By asking this question, interviewers seek to assess your ability to prioritize tasks, communicate effectively, and maintain organization in high-pressure situations. Your response can showcase your organizational skills and commitment to providing timely and efficient support. In your previous experience as a support engineer, you likely employed various strategies to balance multiple tasks while keeping clients satisfied. You may have prioritized requests based on urgency, impact, and order of receipt, ensuring that critical issues received immediate attention and maintaining clear communication with clients throughout the process. A support engineer's role is not just about providing timely assistance, but also about diving into complex technical issues to demonstrate problem-solving skills, critical thinking, and persistence in challenging situations. Interviewers want to assess how you approach troubleshooting, communicate with clients or team members, and maintain a positive attitude while delivering excellent customer service. For instance, I recall a situation where a client's server experienced intermittent connectivity issues, affecting their daily operations. To resolve this complex problem, I employed a systematic troubleshooting method. I started by gathering information from the client about the issue's symptoms and frequency to understand its scope. Then, I analyzed system logs and error messages to identify patterns or potential causes. After narrowing down possible culprits, I conducted tests on individual components such as network devices, cables, and software configurations to isolate the root cause further. Upon discovering that the issue stemmed from an outdated firmware version on the router, I recommended updating it to the latest version. I guided the client through the update process and monitored the system afterward to ensure the connectivity issue was resolved. This experience taught me the importance of methodical troubleshooting and effective communication when addressing complex technical problems. It's essential for a support engineer to manage challenging situations calmly, maintain professionalism, and find solutions that satisfy customers. In my previous role as a support engineer, I encountered irate customers due to recurring software issues that hadn't been resolved despite multiple attempts. To handle the situation, I first allowed the customer to express their concerns and frustrations without interrupting them. This helped them feel heard and acknowledged. Once they finished explaining the problem, I empathized with their situation and apologized for the inconvenience caused. I assured the customer that I would personally take ownership of the issue and work diligently to find a solution. I kept them informed throughout the troubleshooting process and collaborated with other team members when necessary. Ultimately, we were able to resolve the issue, and the customer expressed gratitude for our persistence and dedication. This experience taught me the importance of active listening, empathy, and taking complex technical problems and managing challenging situations. Support engineers play a vital role in resolving complex customer situations by utilizing remote desktop tools to access clients' systems worldwide. A support engineer's proficiency with these tools is crucial for handling technical demands of the job, providing efficient assistance remotely, and showcasing adaptability and in-depth technical knowledge. When discussing experience with specific tools like TeamViewer, AnyDesk, and Microsoft Remote Desktop, it's essential to highlight their user-friendly features, such as file transfer, multi-monitor support, and session recording. For instance, mentioning how these capabilities enable prompt troubleshooting while minimizing downtime for end-users can demonstrate valuable skills. Moreover, effective documentation is a key aspect of a support engineer's role, allowing teams and customers to share knowledge bases that facilitate efficient issue resolution in the future. When discussing one's approach to documenting solutions, it's essential to describe creating a centralized knowledge base with clear summaries, step-by-step processes, necessary screenshots or code snippets, and relevant alternative solutions. By demonstrating proficiency in using remote desktop tools and showcasing a structured documentation approach, support engineers can confidently address complex customer situations and provide efficient technical assistance. As a support engineer, your fundamental knowledge of network protocols such as TCP and UDP is crucial in troubleshooting issues. Interviewers assess your ability to diagnose and resolve network-related problems effectively by evaluating your grasp of these protocols. TCP and UDP are two core communication protocols used in networking. The primary difference between them lies in their connection types, reliability, and data transmission methods. TCP establishes a reliable connection before transmitting data, ensuring data integrity through error-checking mechanisms like acknowledgments and retransmissions. This makes it suitable for applications requiring critical data integrity. In contrast, UDP is a connectionless protocol that sends datagrams without guarantee of delivery or order, making it ideal for real-time applications with minimal latency. When troubleshooting network issues, you'll often encounter connectivity problems. A structured approach to diagnosing and resolving these issues is critical. You should demonstrate your knowledge of networking principles and the tools used to identify the root cause of the issue. This includes isolating the problem, examining hardware and software configurations, analyzing network traffic using monitoring tools, and verifying recent changes in network configuration. Navigating virtualization technologies is an essential skill for Support Engineers, enabling them to manage and maintain virtual environments effectively. Asking about hands-on experience with virtualization platforms helps interviewers evaluate candidates' ability to troubleshoot issues, optimize systems, and support infrastructure. This understanding is crucial for working effectively with modern technologies like AWS, Azure, or Google Cloud Platform. For instance, a support engineer might highlight their proficiency in managing AWS resources, monitoring service health, troubleshooting issues, and optimizing performance using tools like CloudWatch and EC2. Similarly, experience with Microsoft Azure can involve migrating applications, collaborating with development teams, and ensuring security and compliance standards are met. By showcasing expertise in cloud platforms, candidates demonstrate their ability to manage, deploy, and troubleshoot applications in a cloud environment, ultimately providing optimal support to clients. As someone who can adapt quickly and learn new skills, you'll play a vital role in the company's success. To stay up-to-date with industry trends and best practices, I use several strategies. Firstly, I subscribe to top-notch blogs, newsletters, and podcasts that keep me informed about cutting-edge technologies and advancements. Additionally, participating in online forums and communities allows me to engage with peers, learn from their experiences, and gain practical solutions to common problems. I also make it a point to attend webinars, workshops, and conferences whenever possible. Not only do these events provide valuable learning opportunities but also help expand my professional network, which can be an excellent source of information and support. Furthermore, I invest time in continuous learning through online courses and certifications, ensuring that my skills remain relevant and up-to-date. When faced with complex technical issues, collaboration is key. This question assesses your ability to work in a team environment, communicate effectively with colleagues, and leverage collective expertise to address challenges. It demonstrates your willingness to learn from others and contribute to the team's success. For instance, I recall a situation where our company's email server was experiencing frequent downtime. As a support engineer, I collaborated closely with the network administrator and system administrator to diagnose the issue. By dividing responsibilities based on our expertise, we identified that the problem stemmed from an outdated server software version combined with increased email traffic. Together, we developed a plan to upgrade the server software and optimize its settings, which resolved the issue and improved overall email server performance. As a support engineer, you'll be working with databases, optimizing their performance, and ensuring overall stability. My experience with SQL Server, MySQL, or other systems demonstrates my ability to support and maintain these essential components of a company's infrastructure. For instance, I've worked on maintaining SQL Server databases by monitoring performance, optimizing queries, and ensuring data integrity through regular backups. Additionally, I have hands-on experience with MySQL in a project where I designed and implemented a web application's backend using PHP and MySQL, requiring me to create efficient database schemas, write complex queries, and troubleshoot any issues that arose during development and deployment. Understanding the fundamentals of networking is crucial for a support engineer, and one essential component is the Domain Name System (DNS). This process translates human-readable domain names into IP addresses, making it easier for users to access websites and services without remembering complex numerical IP addresses. DNS plays a critical role in ensuring seamless connectivity and efficient routing of data across the internet. When a user requests a website or service, the request goes through a series of DNS servers until the correct IP address is found and returned to the user's device. This process ensures that data is accurately and completely. This included cross-referencing restored data with other sources and verifying its consistency with pre-failure records. 5. Finally, We had complete faith in the accuracy of the recovered information, so we merged it back into our live systems and got operations running smoothly once again. We also conducted an in-depth examination to pinpoint the root cause of the server failure and implemented safeguards to minimize the likelihood of future occurrences. Your proficiency in hardware troubleshooting and repair is a vital component of being a successful support engineer. Interviewers want to assess your level of expertise in identifying, diagnosing, and resolving issues related to hardware. This showcases your ability to minimize downtime and maintain uninterrupted business operations, ultimately contributing to the company's overall success. Example: "As a seasoned support engineer, I have gained extensive experience in troubleshooting and repairing various types of hardware, from desktops and laptops to servers and networking equipment. I am skilled at identifying faulty components such as hard drives, RAM, motherboards, and power supplies using diagnostic tests and visual inspections. Once the issue is identified, I either perform the necessary repairs or coordinate with vendors for replacement parts. Additionally, I have experience upgrading hardware components to improve system performance and extend device lifespan. My ability to efficiently troubleshoot and repair hardware has consistently contributed to minimizing downtime and ensuring that users can continue their work without significant disruptions. This skill set aligns well with the role of a support engineer, where maintaining reliable systems is essential for overall business productivity." A hiring manager may ask this question to gauge your technical knowledge of networking concepts and to see if you have a solid understanding of the OSI model's foundation. As a support engineer, you will likely need to troubleshoot network-related issues, which requires a strong grasp of the OSI model and its layers. This question helps ensure that you have the necessary expertise to effectively diagnose and resolve network problems. Example: "The OSI (Open Systems Interconnection) model is a conceptual framework that standardizes the functions of a telecommunication or computing system into seven distinct layers. Each layer performs specific tasks and communicates with adjacent layers to ensure seamless data transmission across networks. Starting from the bottom, Layer 1 is the Physical Layer, which deals with the physical connection between devices, such as cables and switches. Layer 2, the Data Link Layer, manages error-free data transfer between network nodes and handles flow control. Layer 3, the Network Layer, is responsible for routing data packets between different networks using IP addresses. Layer 4, the Transport Layer, ensures reliable data delivery by managing end-to-end connections, flow control, and error checking. Layer 5, the Session Layer, establishes, manages, and terminates connections between applications running on local and remote computers. Layer 6, the Presentation Layer, is responsible for formatting data to ensure it can be understood by different systems. Finally, Layer 7, the Application Layer, provides services that allow applications to communicate with each other." Understanding network protocols like the OSI model is key for support engineers as it helps in troubleshooting and resolving issues systematically. The OSI model has seven layers, starting from Physical Layer 1 to Application Layer 7. Each layer handles different aspects of data transmission such as physical connection (Layer 1), data framing (Layer 2), routing (Layer 3), etc. Knowing these layers helps identify the source of a problem and fix it efficiently. As a support engineer, proficiency in scripting languages like PowerShell and Bash is necessary for automating tasks and troubleshooting issues quickly. Scripting languages enable efficient automation of repetitive tasks, reducing manual errors and saving time. For instance, using PowerShell scripts to deploy software updates on Windows servers or employing Bash scripts for routine maintenance tasks on Linux-based systems. Effective communication with non-technical users is crucial in support roles as it ensures a smooth resolution of issues and a positive experience for the end-users. Breaking down complex technical concepts into simple language, and using analogies or visual aids when necessary are key skills required for this role. Technical expertise is crucial for a Support Engineer, with tools like Nagios or Zabbix being essential for monitoring IT infrastructure. Employers value hands-on experience with these tools, demonstrating ability to identify issues, troubleshoot, and maintain system performance. Familiarity with monitoring tools showcases skill in keeping systems running smoothly, contributing to overall company success. Example: During my previous role as a support engineer, I worked extensively with Nagios for monitoring network infrastructure and server performance. My responsibilities included configuring Nagios to monitor metrics like CPU usage, memory consumption, disk space, and network latency. Additionally, I set up custom alerts and notifications to address potential issues promptly. While not directly working with Zabbix, I'm familiar with its capabilities and understand it shares similarities with Nagios in terms of functionality. Given my experience with Nagios, I'm confident in adapting to using Zabbix or other monitoring tools if required. Understanding technical aspects is vital for a support engineer. This question tests knowledge of VPN connections and setup process, as well as ability to explain complex concepts to non-technical audience. Demonstrating clear guidance through technical processes showcases communication skills and ability to make complex concepts accessible. Example: Setting up a VPN connection involves configuring both the VPN server and client device. On the server side, you'll need to enable VPN services, configure authentication methods, and set up encryption protocols. This typically includes creating user accounts with secure passwords or setting up certificate-based authentication. As a support engineer, my goal is to effectively convey complex technical concepts to a broader audience while keeping information up-to-date. In my previous role, I created and maintained technical documentation by planning, drafting, reviewing, and updating content. This involved identifying target audiences, determining relevant detail levels, using clear language, and incorporating visuals. I also ensured document accuracy through collaboration with colleagues and regular updates. In this role of IT engineer, regularly check in on performance metrics, find areas where we can improve, and make changes to make our IT services better is super important. This helps us stick to the ITIL principles, which makes processes smoother, customers happier, and overall business more successful. When faced with a tricky tech issue, it's cool to know when to ask for help or consult with experts who've been around longer. Showing that you're willing to learn from others and work together is key. Example: "If I'm stuck on something, first thing I do is check out the docs, knowledge base, and internal forums. If that don't solve it, I reach out to my team for help. Sometimes, just talkin through a problem with them can give us some new ideas or approaches. If the issue still persists after talkin to my peers, then I'd escalate it to someone higher up or get an expert involved. Throughout this whole process, I keep in touch with the customer and let 'em know what's goin on. This way, we can solve issues quick and make sure customers are happy. Knowin some project management methods like Agile and Scrum is also important for support engineers. It shows that you're a team player who follows established processes. By understandin these methods, I can help my team work more efficiently and get projects done on time and within budget. Plus, it means I'm always up-to-date with the latest industry best practices. Example: "Yeah, I know both Agile and Scrum methodologies. In my prev role as a support engineer, our team used Agile to manage software dev projects. We worked in short sprints, had daily stand-up meetings to stay on track, and ensured everyone was aligned on priorities. I also have experience with Scrum where we had designated roles like the Scrum Master and Product Owner. The Scrum Master kept everyone communicatin' while makin sure we stuck to Scrum principles. As a support engineer, I worked closely with devs and QA testers during each sprint." In my previous role as an IT support engineer, I actively participated in projects where I had the opportunity to apply Agile and Scrum methodologies. This hands-on experience allowed me to develop strong project management skills and quickly adjust to changing priorities in fast-paced environments. For example, during a project at ABC Company, I was responsible for ensuring that company policies were being followed regarding device usage by employees. To do this, we implemented an MDM vendor that not only secured our devices but also configured them according to the set guidelines. My duties involved setting up new user accounts, deploying necessary applications, and monitoring the overall compliance of the devices with the organization's rules. I was also heavily involved in a project where we transitioned from one MDM vendor to another. This process required me to research different options, evaluate their features, and assist with the migration process. To ensure a seamless transition, I worked closely with the IT team and end-users. In addition to my experience with Agile and Scrum, I have also had hands-on training in load balancing techniques. Load balancing is crucial for optimizing network resources and ensuring high performance. It works by distributing network traffic across multiple servers or resources, preventing any single server from becoming a bottleneck that could lead to system failure or slow response times. There are various algorithms used in load balancing, including round-robin, least connections, and weighted distribution. Load balancers can be implemented using hardware appliances, software applications, or a combination of both. Implementing load balancing not only improves performance but also provides redundancy by automatically redirecting traffic to healthy servers if one becomes unavailable due to maintenance or failure. Interviewers often ask learners about their approach to learning new technologies. This line of questioning is meant to assess how well you can adapt to emerging trends and tools, as well as your capacity for swift knowledge acquisition. The underlying goal here is to gauge your dedication to ongoing professional growth and your eagerness to tackle novel challenges in the tech industry. Example: "During our company's transition to a new project management software, I took on the responsibility of providing technical support to our team. To get up-to-speed with the new system, I began by delving into its official documentation and watching tutorial videos from the vendor. This gave me a foundational understanding of its key features and functionalities. Next, I set up a test environment to hands-on explore the software, which enabled me to pinpoint potential issues and solutions before implementation. As a result, when we rolled out the new software to the team, I was well-equipped to address any questions or concerns they had, thereby ensuring a seamless transition and contributing to increased productivity within our organization."

Support engineer interview questions. Product support specialist interview questions and answers. Product support engineer interview questions and answers. Zscaler product support engineer interview questions. Google product support engineer interview questions. Razorpay product support engineer interview questions. Product support engineer questions. Imperva product support engineer interview questions. Juspay product support engineer interview questions. Amagi product support engineer interview questions. Saas labs product support engineer interview questions. Sprinklr product support engineer interview questions. Product support engineer job description.